



IF-2K

if-2k

the internet filter
internetfilter.com

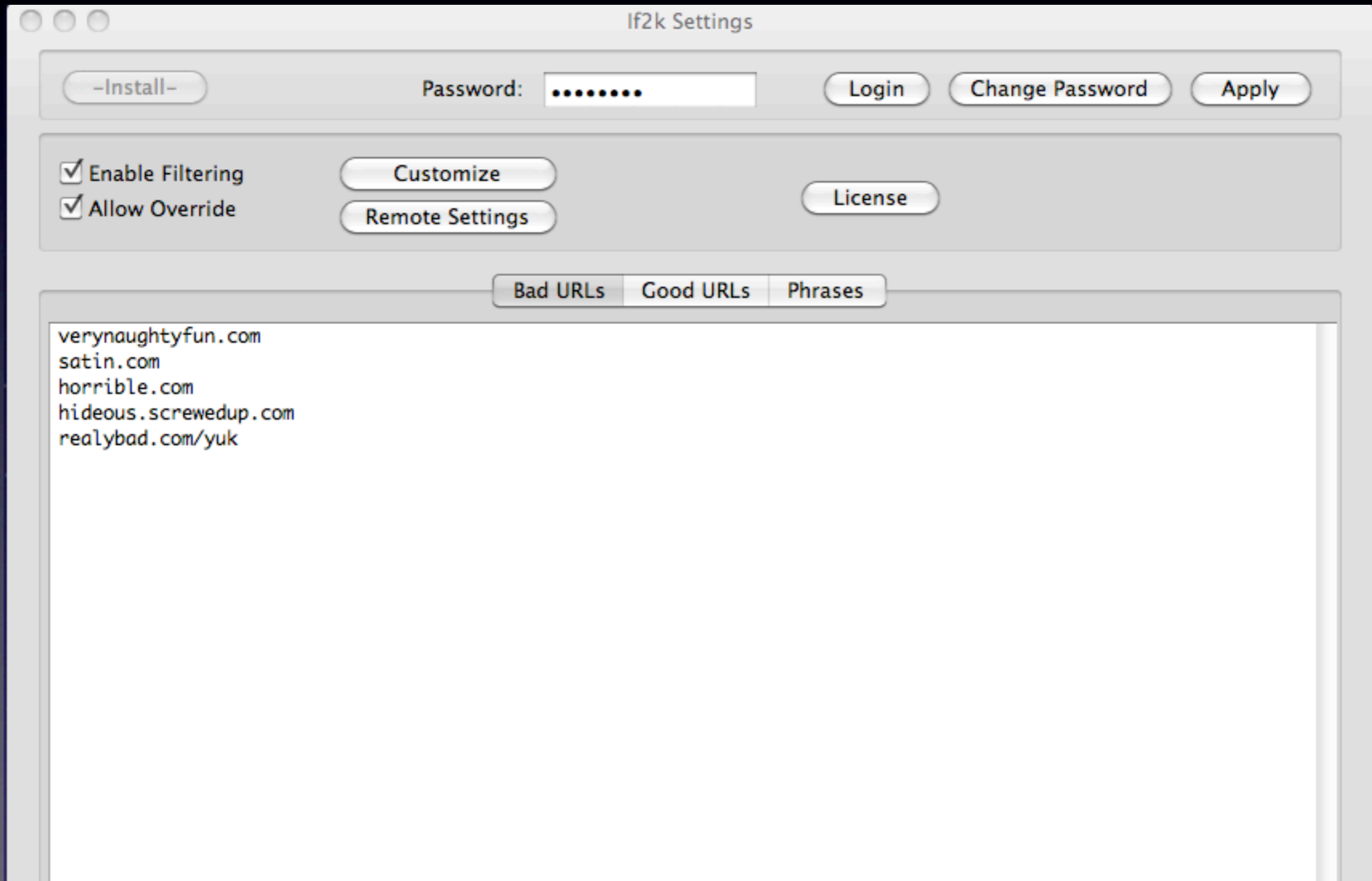
customize your blocking option



IF-2K

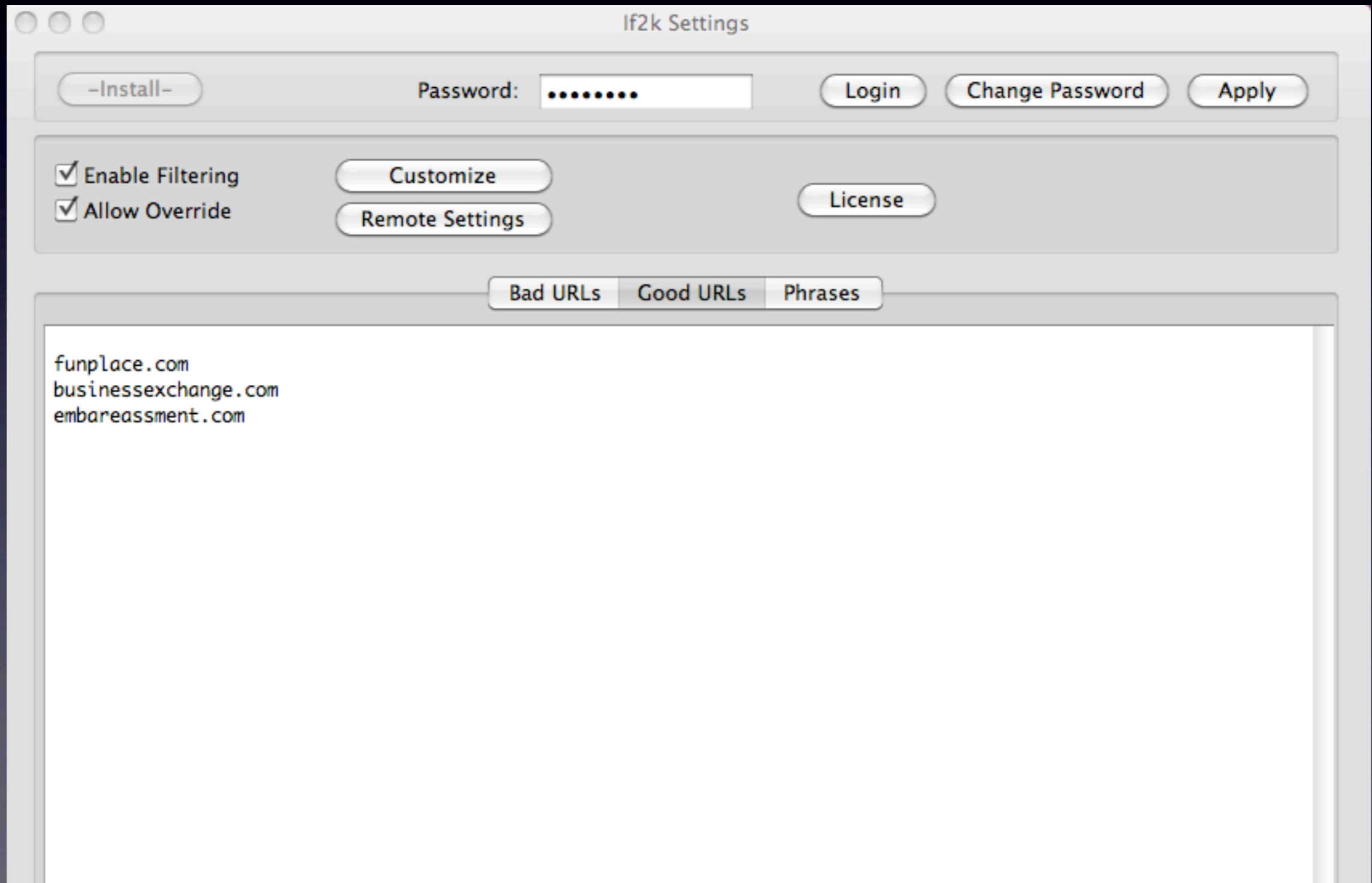
If you want to add additional url's to be blocked click on the Bad URL's button.

Enter the urls in the form(s) you see below. Click on apply. Your available memory is the limit of the length of your list. You may cut and paste. When testing remmber this- the site you downloaded will be in your cache and your computer will pull it fro cache causing you to think it is not working. Refresh your browser and/or clear your cache if you have perormed many tests.





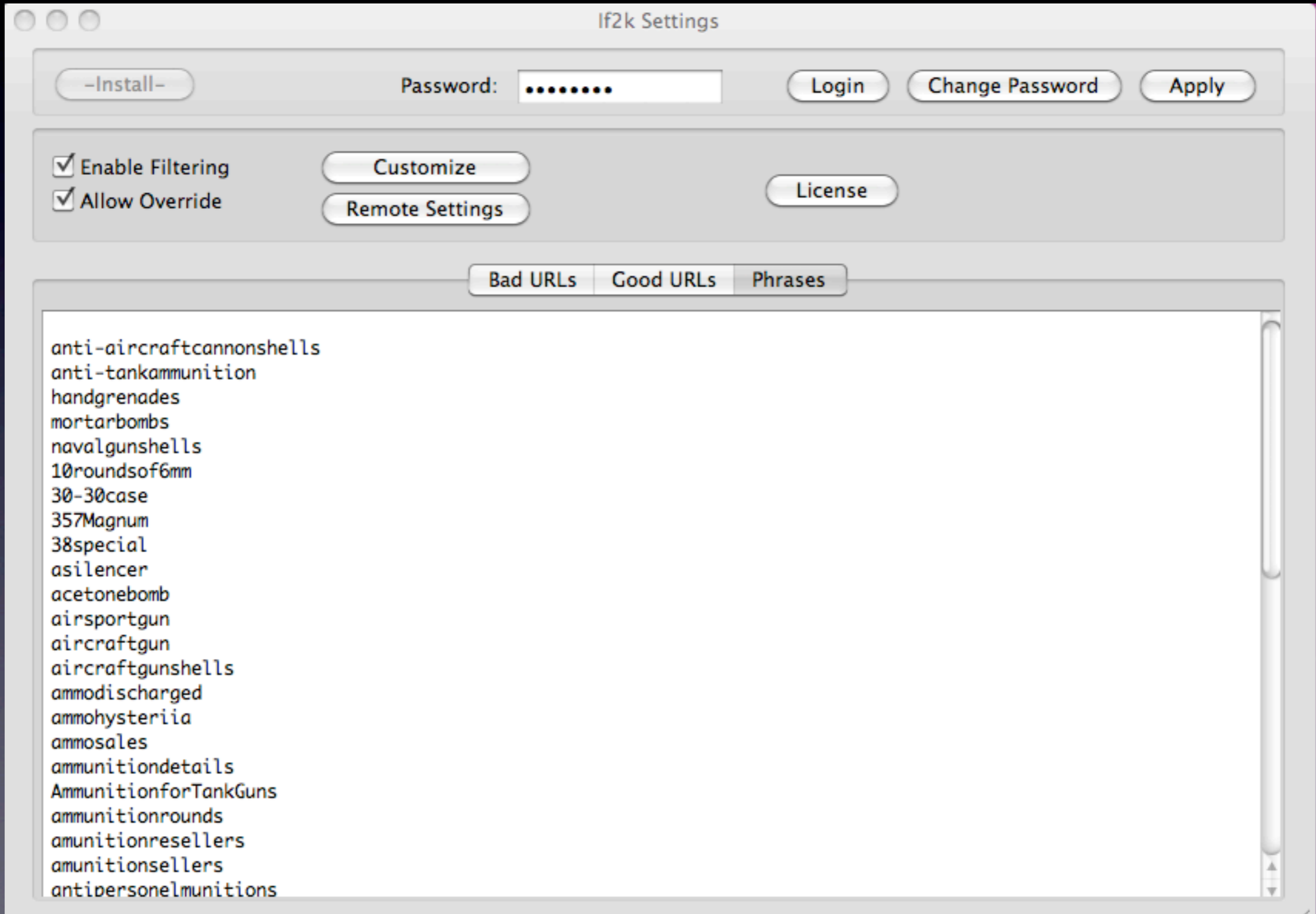
If you want to visit a site that is blocked by if-2k then click on the Good URLs button. enter the domain(s) and click on apply. Good URLs will over ride any bad URLs in the data bases.





IF-2K

if-2k uses a dynamic phrase filter that is very effective. This is the way we keep up with the rapidly changing array of websites today. If you think you want to add a category. You can look at a few websites and quite quickly grasp the key phrases that characterize the subject. Cut and paste the phrases into the good site window. Notice there are no spaces between the words. As always -click on apply.





IF-2K

Click on the Customize settings button and if you click on Block Unknown Sites and click off all the others then you have transformed the filter that will only allow what you list in the good url's. This has been of interests for businesses that want to use the net as a conduit but do not want to allow "surfing".

The next slide show will be all about customized settings.

Customization Settings

Block Bad Sites Censor bad URLs in content
 Block Unknown Sites Censor bad phrases in content
 Allow Content via 'Referer'

Content match count before blocking

Block Page Title:
Block Page Image:
Block Page Image Link:
Block Page Text:
Block Page URL:

Redirect Images on bad sites

Redirect JPG images to:
Redirect GIF images to:
Redirect PNG images to:

Filter Server Bind Address:
Filter Server access address:

Change Password Apply

Cancel Apply